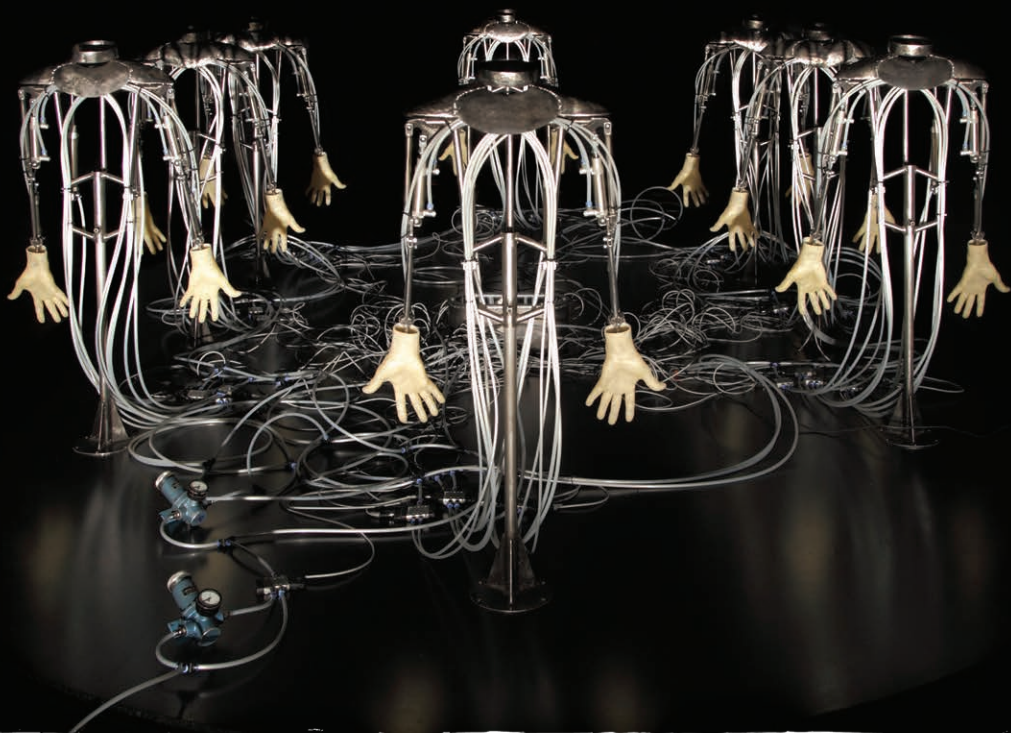


# BANKSIDE'S IMMERSIVE ARTS FESTIVAL

**MERGE  
FESTIVAL**

ART, MUSIC &  
PERFORMANCE  
ON BANKSIDE



18<sup>TH</sup> SEPTEMBER – 19<sup>TH</sup> OCTOBER 2014

MERGEFESTIVAL.CO.UK

## MERGE line-up



Plan your visit and find out what's on at MERGE 2014.

- 03 **Alex Chinneck**  
'A pound of flesh for 50p'
- 04 **Peter William Holden**  
'Dance Machines'
- 05 **Bompas & Parr**  
'Sensed Presence'
- 06 **Tamiko Thiel**  
'Fractured Visions'
- 07 **Candy Chang**  
'Sidewalk Psychiatry'
- 08 **Caravan Theatre and Nursery Festival**
- 10 **Live music on The Riverside Stage**
- 12 **Frequencies and Resonance FM**
- 13 **Ruth Ewan**
- 14 **The Crucible**  
'Where Scientists Meet Artists'
- 14 **MERGE Instagram Walk**
- 15 **Location map**

## Welcome to MERGE 2014

For the fourth year this annual immersive arts festival returns to London riverside destination, Bankside.

This year's exciting and diverse programme explores the relationship between art and science. Discover, see and enjoy tap dancing robots, a melting house, supernatural experiences, a sonification experiment and much more...

Historic buildings and Bankside open spaces will be transformed as major names and emerging talent from the UK and international art world stage interactive installations, experimental theatre and live music.

Presented by *Better Bankside* and ILLUMINATE PRODUCTIONS.

### BANKSIDE TRANSFORMED

## A pound of flesh for 50p

Alex Chinneck

📍 40 Southwark Street, Bankside, London SE1

🚶 London Bridge / Borough

📅 Friday 26<sup>th</sup> September onwards

🕒 24 hours a day

£ FREE



A pound of flesh for 50p is a full-sized two-storey

house made from 8,000 wax bricks that will melt to the ground over 30 days. This project celebrates the history of an old candle making factory which was based in Bankside a couple of centuries ago.

The installation will mirror the scale, design and scenery of an archetypal property before the bricks begin to drip and the building starts to warp, leaving just the roof on the ground in a pile of melted wax.

The bricks will be cast in paraffin wax in beds of terracotta sand, matching the colour, coarse surface and irregularity of a real wall. Chinneck has collaborated with chemists, wax manufacturers and engineers to develop visually convincing bricks that transform in the most sculpturally effective way.

With surrealism and spectacle the experience delivers an illusion of architectural scale that transforms each day.

Inspired by London's industrial landscapes, Chinneck explores the space between art, theatre and architecture.



### LAST CHANCE TO SEE

## Miner on the Moon

Alex Chinneck

For MERGE Festival 2013 Chinneck built an upside down house to international acclaim. The large-scale building on Blackfriars Road is due to be demolished at the end of this year's festival to make way for a new development. Join us to create a narrative for its final days.



## BANKSIDE TRANSFORMED

# Dance Machines

*Peter William Holden*

📍 88 Borough High Street,  
Bankside, London SE1 1LL

🚶 London Bridge / Borough

📅 Thursday 18<sup>th</sup> September  
– Sunday 12<sup>th</sup> October

🕒 Wednesday – Sunday 12 – 7pm

£ FREE

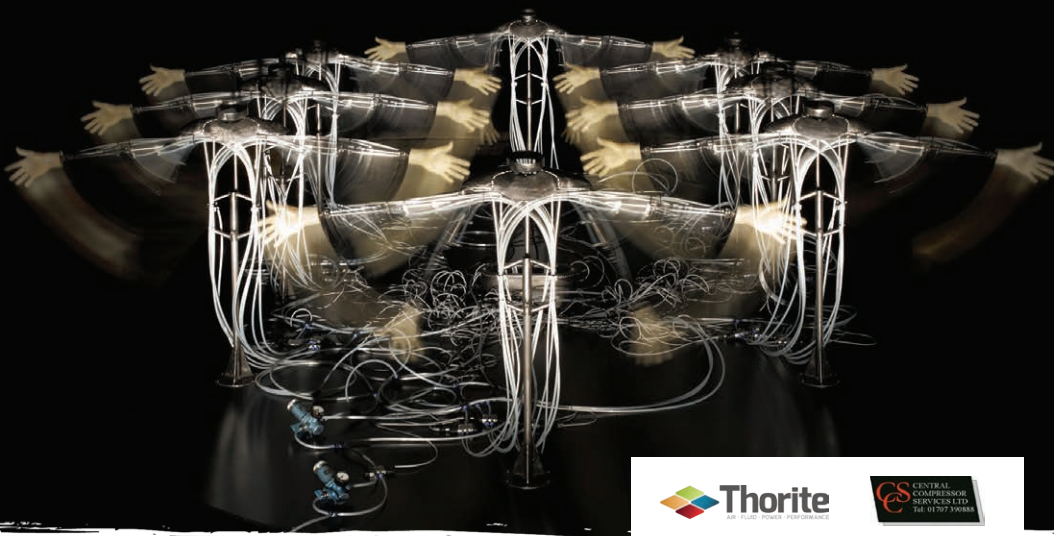
British visual artist Peter William Holden combines art and music with science via robotic engineering.

Tap dancing robots bring a disused building to life with a symphony of rhythms and taps activated by the public at the control panel. Adventurous spectators

can reinvent the piece and create their own composition using sixteen switches to trigger short sequences of sound and movement.

A second work is inspired by the Industrial Revolution. The motion of the machine emphasises the relentless movement of progress as the robot moves to its predetermined program, ignorant of its environment and unwilling to stop if anything gets in its way.

Peter William Holden lives and works in Leipzig, Germany. Holden is an installation artist influenced by electronic subculture and street culture. His practice focuses on the transformation of objects, utilising his knowledge of applied mathematics. He makes kinetic sculptures and movies, which have been presented at numerous exhibitions and festivals around the world.



**Thorite**  
RE-PLUG POWER. PERFORMANCE

**ES** CENTRAL  
COMPRESSOR  
SERVICES LTD  
THE 01707 30000

## BANKSIDE TRANSFORMED

# Sensed Presence

*Bompas & Parr*

📍 The George Inn,  
75-77 Borough High Street,  
Bankside, London SE1 1NH

🚶 London Bridge / Borough

📅 30<sup>th</sup> September – 19<sup>th</sup> October

🕒 Saturday – Wednesday 12 – 8pm

£ FREE – booking essential

In such a historical area that was heavily affected by the Blitz, the Plague, body snatchers as well as supporting prisons and major hospitals, it isn't surprising there are so many sightings of ghosts and other paranormal activity in Bankside.

British conceptual artists Bompas & Parr have created an installation that fuses cutting edge science, art and spirituality. Be transported in a multimedia séance that plays on both the technological and supernatural meaning of the word 'medium'. The Koren Helmet (sometimes called The God Helmet) uses tiny electromagnets to stimulate the brain's temporo-parietal lobes, through which you may experience paranormal and religious visions.

Visit [mergefestival.co.uk](https://mergefestival.co.uk)  
to book a 15 minute experience



## Bankside Ghost Stories

As London's oldest borough, Southwark has a rich history and there are numerous tales and sightings of ghosts in the area. The most talked about and well known haunt the pubs of Borough and major attractions such as the Clink Prison Museum. One such example is the George Inn. The current George Inn building was built in 1677 replacing the original building which was destroyed in a fire. It is owned by the National Trust and is the only remaining galleried coaching inn in London. A ghost called Miss Murray is rumoured to walk the stairs of the George. The elderly Edwardian lady supposedly lived above the building in a previous life. She is said to have an aversion to technology; tills crash with no apparent fault and sometimes digital cameras malfunction inside the pub.

booking essential  
for tickets visit  
[mergefestival.co.uk](https://mergefestival.co.uk)



## BANKSIDE TRANSFORMED


# Fractured Visions: To See Again

*Tamiko Thiel, commissioned by  
AXNS Collective*

 **King's College London, Guy's Campus, London Bridge, SE1 1UL**

 **London Bridge / Borough**

 **25<sup>th</sup> September – 30<sup>th</sup> October**

 **24 hours a day**

 **FREE**



Download the app and  
interactive map to view at  
[axnscollective.org/fv](http://axnscollective.org/fv)

Launch seminar and tour:  
25<sup>th</sup> September, 6pm

From 25th September, visitors to The Shard and King's College Guy's Campus can view a new digital artwork by internationally renowned artist Tamiko Thiel. Made in collaboration with psychiatrist and clinical lecturer Dr Dominic ffytche, the work explores the fragility of human vision and our perception of reality.

The digital artwork is produced using *Augmented Reality* and is inspired by a rare visual disorder called *palinopsia*, which causes the vision to fragment and repeat. Thiel's digital imagery disrupts the field of vision when viewed through an Android, iOS phone or tablet application. Architectural details of the surrounding buildings are layered and repeated on top of the actual structures, such that the viewer experiences the disorienting effects of this extreme condition. 'Fractured Visions' will provide viewers with a unique emotional and experiential perspective on how the world can look through different eyes.

'Fractured Visions' is commissioned by AXNS, a curatorial collective dedicated to widening public understanding of neuroscience through art.



"Every day I walk myself into a state of well-being and walk away from every illness; I have walked myself into my best thoughts."


- Søren Kierkegaard



## BANKSIDE TRANSFORMED

# Sidewalk Psychiatry

*Candy Chang*

 **Various locations including Southwark Street, Blackfriars Road, Borough High Street, Bankside, SE1**

 **London Bridge / Southwark**

 **18<sup>th</sup> September – 19<sup>th</sup> October**

 **24 hours a day**

 **FREE**

After the success of Candy Chang's piece 'Before I Die' for MERGE 2013, this year Chang has reworked a piece originally produced in New York in 2006. To encourage self-evaluation whilst walking around Bankside, 'Sidewalk Psychiatry' will pose ten psychological questions on pavements in the area using stencils and temporary spray chalk, such as:

- Do you think that went well?
- Do they know how you feel?
- Then why do you do it?
- What are you waiting for?

Candy Chang is a Taiwanese American artist, an introvert with a background in urban planning and design. Since 2008, she has created interactive experiments in public spaces, which have inspired hundreds of remixes around the world.



## THEATRE

# Caravan Theatre

Programmed by Robin Linde  
Productions

 The Riverside Stage beside  
Millennium Bridge near Tate Modern,  
Bankside, London SE1 9TG

 Southwark / Blackfriars

 18<sup>th</sup> September – 19<sup>th</sup> October

 1 – 6pm Wednesday – Sunday

 FREE – booking essential

Live theatre will be showcased in the intimate setting of a 70s gold safari caravan, where four audience members at a time will have a unique 15 minute theatrical experience.

### We'll call him Pim

Written and performed by Robin Steegman  
18<sup>th</sup> – 21<sup>st</sup> September

A teenage love story where young, beautiful, innocent puppy love meets deep, dark, slightly obsessive behaviour.

### Tick – Tock

Created and performed by Chien-Han Hung and  
Rakel Dimar

9<sup>th</sup> – 12<sup>th</sup> October

A surreal and visually charged show. Enter a port into a surrealist time bubble in the golden caravan of hopes and dreams, of past and future.

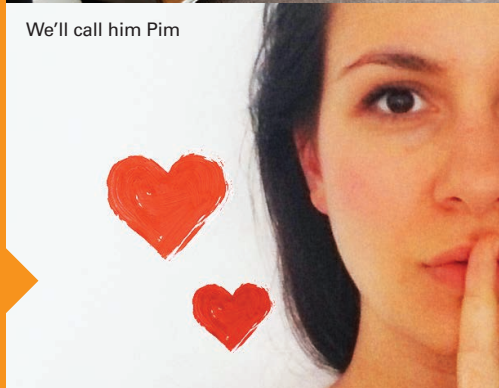
### Fairy Dregs and Friends

Written and performed by Sammy Kissin  
16<sup>th</sup> – 19<sup>th</sup> October

Enter an otherworld where a fairy trapped in a bottle of Merlot challenges you to a game of snap. Come share in the mirth, misery and whimsy.



We'll call him Pim




My Name is B



## THEATRE


# The Nursery Festival

 Railway Arch, 61 Ewer St,  
London, SE1 0NR

 Southwark / Borough  
/ London Bridge

 10<sup>th</sup> and 11<sup>th</sup>, 17<sup>th</sup> and 18<sup>th</sup> October

 7.30 – 8.30pm and 9 – 10.15pm

 £8.00 – to book a ticket  
visit [mergefestival.co.uk](http://mergefestival.co.uk)

Performances will be held in a railway arch in Bankside. A programme of new, devised and improvised theatre will showcase emerging artists.

The Nursery Festival will continue until the weekend of 24/25<sup>th</sup> October, visit [thenurserytheatre.com](http://thenurserytheatre.com) for further details.

### The Wunderkammer, AKA 'Cabinet of Curiosities'

Starring DNAYS and special guest improvisers  
Friday 10<sup>th</sup> October, 7.30pm

Part-TED-style talk, part improvised comedy show, an Aladdin's cave of peculiarities, curiosities and most importantly laughter. Feed your mind and your funny bone in one swoop - discover what's inside The Wunderkammer.

### Ten Thousand Million Love Stories by Heather Uguhart and Jules Munns

Saturday 11<sup>th</sup> October, 7.30pm

Ten Thousand Million Love Stories takes stories from the audience and weaves the characters, situations and ideas behind them into an improvised play that changes nightly.

### Death - A Comedy

by Single Shoe Productions

Friday 17<sup>th</sup> October, 7.30pm (one of two shows)

Single Shoe Productions presents a comedy about how you want to be remembered and what you hope people will forget. You're going to die and so are we. Are you ready for it?

### David Razowsky

Friday 17<sup>th</sup> October, 7.30pm (one of two shows)

In this show, David will be performing with a local improviser to bring his brand of internationally famous comedy to the UK stage.

### Eggshells

by Fiona Harper

Saturday 18<sup>th</sup>  
October, 7.30pm  
(one of two shows)

Eggshells tells the story of Glen and Hannah, over one tumultuous evening where their relationship and mental health begin to disintegrate.

### My Name is B

by Anthony Keigher, Emma Berentsen,  
Tiffany Murphy and Umit Erlim

Saturday 18<sup>th</sup> October, 7.30pm (one of two shows)

My Name is B explores the theme of control and questions whether over-controlling ourselves can result in a complete loss of self-control.




booking essential  
for tickets visit  
[mergefestival.co.uk](http://mergefestival.co.uk)



# The Riverside Stage

The Riverside Stage by the Millennium Bridge will showcase live music in a series of weekend gigs throughout the festival. The stage is curated by vibrant music venues to promote original song writing from upcoming British talent.

 **River walkway outside Tate Modern, Bankside, London SE1 9TG**

 **Southwark / Blackfriars**

 **27<sup>th</sup> and 28<sup>th</sup> September, 4<sup>th</sup> and 5<sup>th</sup> October**

 **12 – 6pm**

 **FREE**

## PROGRAMME

### SATURDAY 27TH SEPTEMBER

**12pm** Jack Harris  
**1pm** Coley Garrat  
**2pm** Troubadour Rose  
**3pm** The Odd Folk  
**4pm** The Hallelujah Trails  
**5pm** Flux

*Programmed by Rory Carlile from the London Bridge Roots venue The Gladstone Arms.*

### SUNDAY 28TH SEPTEMBER

**12pm** Ned Roberts  
**1pm** James McArthur & The Head Gardeners  
**2pm** Ma Polaine's Great Decline  
**3pm** Son of Kirk  
**4pm** The Self Help Group  
**5pm** Yeah Yeah Castle

*Programmed by Rory Carlile from the London Bridge Roots venue The Gladstone Arms.*

### SATURDAY 4TH OCTOBER

**12pm** The Owl Service  
**1pm** Stick in the Wheel  
**2pm** The Lords of Thyme  
**3pm** Sophie Williams  
**4pm** Slate Island  
**5pm** Joe Murphy

*A tribute to the folk legend, Shirley Collins. Programmed by Burning Bridges.*

### SUNDAY 5TH OCTOBER

**12pm** The Petrels  
**1pm** Spannertate  
**2pm** Garance Louis & the Mitochondries  
**3pm** Franky & the Jacks  
**4pm** The Top Shelf Band  
**5pm** The Turbans

*Curated by Rena Beck from the eclectic world music venue Jamboree.*



## SECRET GIGS

**Various dates throughout the festival**

Live music performances in unexpected places and hidden historical spaces around Bankside (bands to be announced). Visit [mergefestival.co.uk](http://mergefestival.co.uk) for more details.





## COLLABORATIONS

# Resonance FM Radio Shows



Science Gallery Pop Up, The  
Basement, Boland House, St  
Thomas Street, London SE1 9RT



London Bridge



Four Saturdays of the festival  
and the two weeks prior

Every weekend during MERGE, Resonance FM will be broadcasting live radio and sound-art interventions from the Science Gallery Pop-Up. This coincides with 'Frequencies: Tune into Life', an experiment in sonification investigating periodic biological phenomena and human lifecycles.

### FREQUENCIES: Tune into Life

In collaboration with the Science Gallery, London.

### SAWCHESTRA

*The Riverside Stage*

*Saturday 27<sup>th</sup> September, 6 - 6.30pm*

Sawchestra collaborated with a student midwife and sound engineer to create a range of textured sounds inspired by birth.

### PETER GREGSON

*The Riverside Stage*

*Sunday 5<sup>th</sup> October, 6 - 6.30pm*

Peter Gregson worked with a cancer specialist and clinical director at Guy's and St Thomas' Foundation Trust to explore algorithms contained in our blood cells, with Peter interpreting this for cello.



## ART

# Ruth Ewan

Artist Ruth Ewan will begin an ongoing research project, considering the past and present political and social significance of bread. In collaboration with Tate Modern, Bread Ahead bakery school and local residents, Ewan will begin a series of workshops. Participants will be invited to bake bread and engage in a dialogue with specialists including food historians, bakers, food sculptors, food bank organisers and economic experts. The workshops and research will culminate in a project by Ewan for MERGE Festival 2015.



"...demonstrate before the palaces of the rich; demand work.  
If they do not give you work, demand bread.  
If they deny you both, take bread.  
It is your sacred right."

- Emma Goldman, 1893

ART

# The Crucible

Where Scientists Meet Artists



The Gordon Museum of Pathology, Hodgkin Building, Guy's Campus, King's College London, London SE1 1UL



London Bridge



Thursday 9<sup>th</sup> October



6.30 – 9.30pm



FREE – booking essential



## MERGE Instagram Walk



Sunday 28<sup>th</sup> September



FREE

What can artists and scientists learn by listening to each other's viewpoints? These two important communities will come together for an evening of discussion, debate and idea-sharing on the subject of anatomy.

The event is in collaboration with the Dennis Rosen Trust which exists to foster both greater understanding of art by scientists and of science by artists.

This is a ticketed event strictly for artists and scientists. Chaired by Dr Dan Glaser, Director of Science Gallery London. Guest speakers to be announced.

Numbers are limited to 50 from the arts and 50 from science. To reserve your place, please email [julia@illuminateproductions.co.uk](mailto:julia@illuminateproductions.co.uk)



booking essential  
for tickets visit  
[mergefestival.co.uk](http://mergefestival.co.uk)

### EVENT MAP

- 03 A pound of flesh for 50p
- 04 Dance Machines
- 05 Sensed Presence
- 06 Fractured Visions
- 07 Sidewalk Psychiatry
- 08 Caravan Theatre
- 09 The Nursery Theatre
- 10 Riverside Stage
- 14 The Crucible





 [mergefestival.co.uk](http://mergefestival.co.uk)  
 @MergeFestival #MergeBankside

MERGE is brought to you by

Illuminate  
Productions

Better  
Bankside

In partnership with



DELANCEY

